





# INTEGRATING THE BEST OF ALL POSSIBILITIES

When one thinks of a vibrant, sustainable community, the image of Arden City should appear. This was the overriding vision and goal that was shared when conceiving the idea to build this multi-faceted development. Arden City is poised to be the focal point of all things social, commercial and corporate in Kota Samarahan.



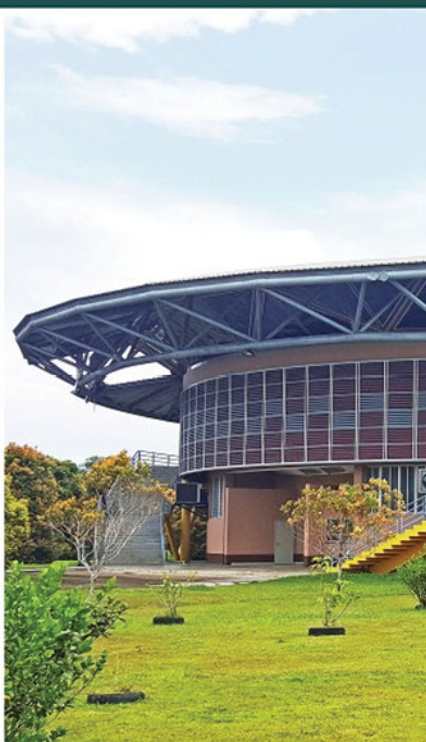
# A NEW BREAKTHROUGH WITH INFLUENTIAL BACKING

GOVERNMENT INITIATIVE  
WITHIN A SCORE REGION

The 77.9-acre township is strategically located and surrounded by incredible medical amenities, such as the Sarawak Heart Centre, quality educational institutions, such as UNIMAS, and modern infrastructure, with the future SM05 ART Station within arm's reach. Arden City is Ibraco's initiative to breathe new life and raise standards of living in the area.



CORPORATION



RECREATION



SHOPPING



COMMERCIAL



HEALTHCARE



EDUCATION



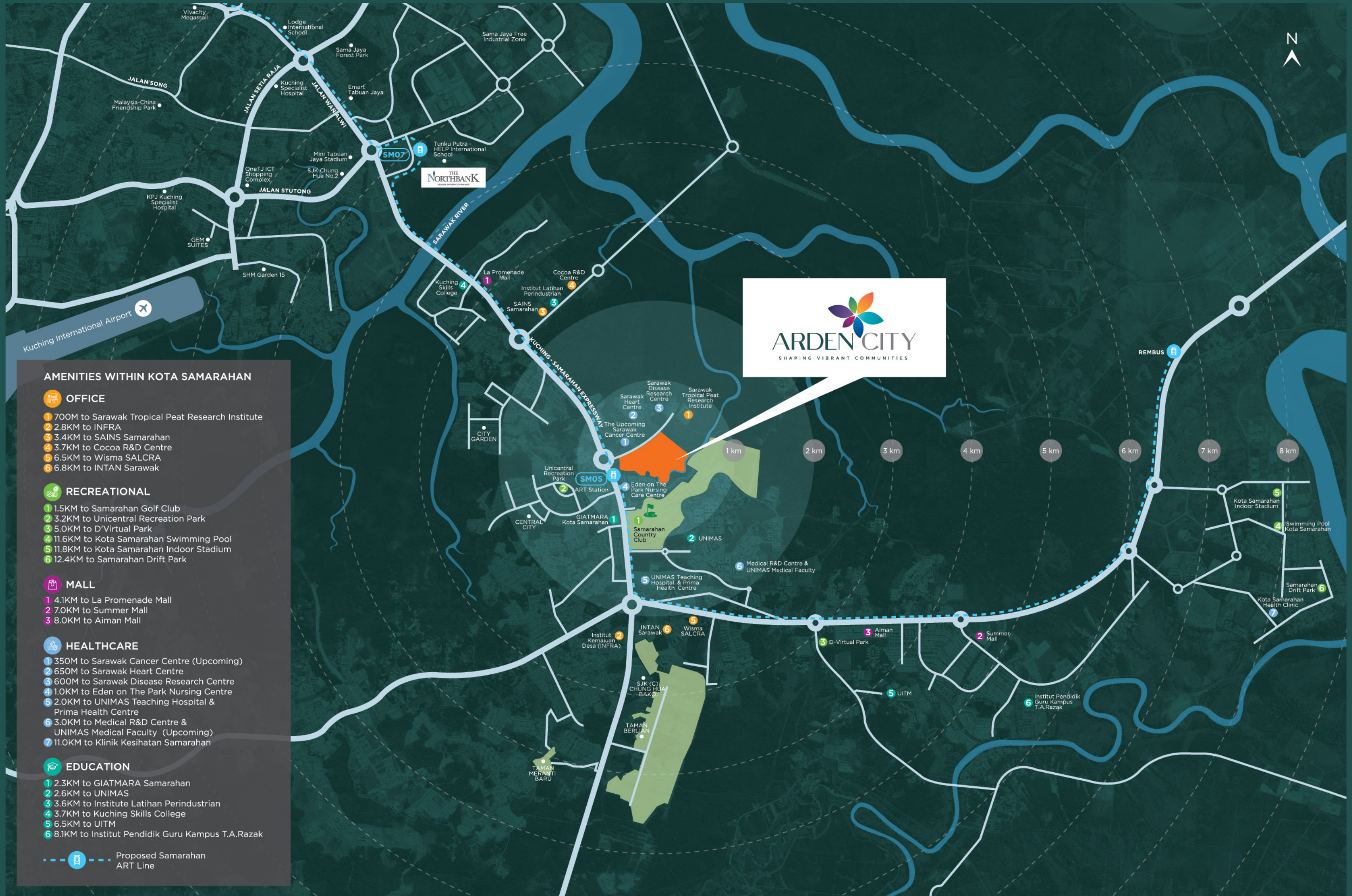
RESIDENCE



TRANSPORTATION









# THE FUTURE OF URBAN CONNECTIVITY

- Enhanced connectivity throughout Kuching
- Covered walking pathway to the SM05 ART Station
- Operates on dedicated Hikmah Exchange-Rembus Line



# CENTRED ON CONNECTING PEOPLE & PLACES

Arden City is strategically located for seamless connectivity with popular destinations and mature amenities. It is just a short walk to the Sarawak Heart Centre and future SM05 ART Station, while Ibraco's integrated township, The Northbank, is only 4 kilometres away.



✈️  
13 KM  
To Kuching International Airport

🕌  
14.8 KM  
To Kuching Waterfront

🎓  
1.5 KM  
University of Malaysia, Sarawak

🏌️  
700 M  
Samarahan Country Club





SUSTAINABILITY  
UNLIKE ANY OTHER



LEISURE



# A WHOLESOME ECOSYSTEM

Arden City consists of 6 primary components that, together, form a truly self-sustaining environment where people may live, work, play and shop in the same place. Such a high degree of synergy makes for an extremely convenient and fulfilling lifestyle for people of all walks of life.

HEALTHCARE



OFFICE



TRANSPORTATION



COMMERCIAL



RESIDENCE



NEW URBAN  
DESTINATION



NEW  
INFRASTRUCTURE



READY  
CATCHMENT



LOCAL ECONOMIC  
GROWTH



FULLY WALKABLE  
MINI-CITY

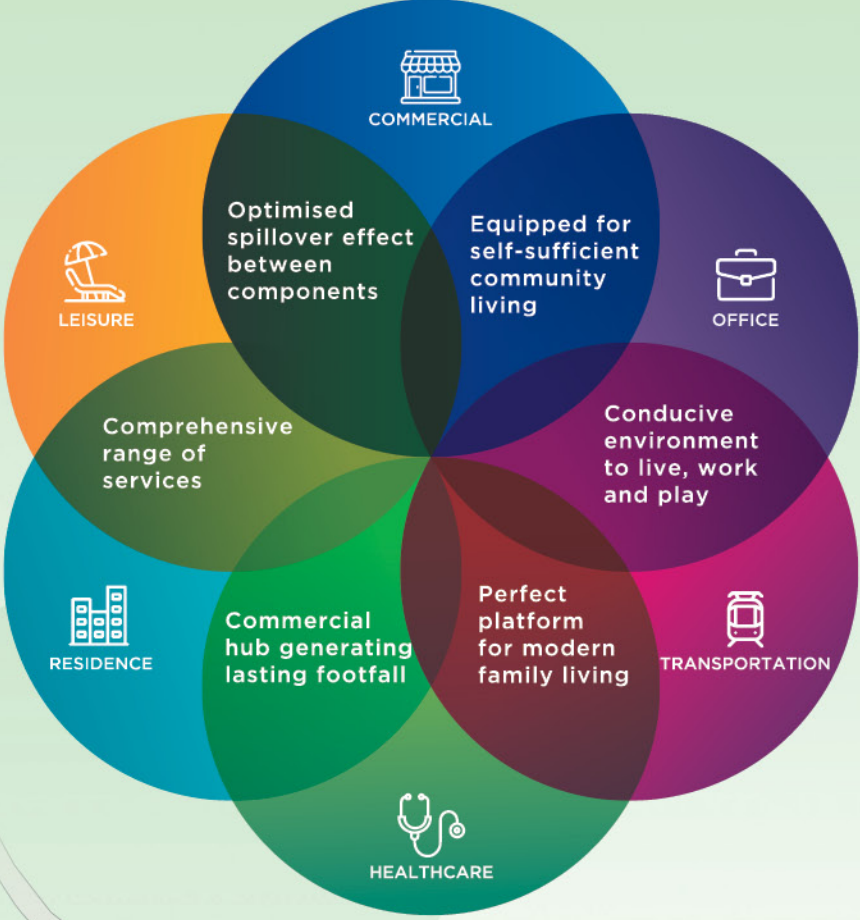


ENVIRONMENTAL  
PRESERVATION



# DESIGNED TO THRIVE

This masterfully planned mixed-use development is not just a highly sustainable ecosystem, it is also a catalyst for further development of the areas surrounding Arden City. The presence of key infrastructure and lifestyle hubs in one location means that communities can flourish by minimising time spent commuting. Genuine sustainability is also deeply rooted in maximising the spillover effect between each component.



## MASTER PLAN

- OFFICE
- HEALTHCARE
- SHOPHOUSE & COMMERCIAL
- RESIDENCE
- LEISURE
- FUTURE DEVELOPMENT








# THE HEART OF EXCITEMENT

As the first mixed development located between Kota Samarahan and Kuching, the commercial square within Arden City offers many great features that add a touch of colour and vibrance to the area. 39 units of three-storey shops will be home to an exciting mix of products and services, where patrons may experience leisure and convenience, close to home.

  
3-Storey  
**39**  
units

  
Single  
Frontage  
Shops  
**25** units

  
Double  
Frontage  
Shops  
**14** units

COMMERCIAL





# A HOME FOR EVERY LIFESTYLE

At 25 storeys high, the serviced apartments overlook an interesting and diverse surrounding landscape that includes the bustling commercial centre, scenic river and golf course. Homeowners can choose from three different layouts and sizes in the studio, intermediate and dual key units. This perfectly accommodates a multitude of family sizes, as well as individuals of different lifestyles.



Total  
**672**  
units



Total  
**940**  
Carparks



1 Bedroom  
2 Bedrooms  
3 Bedrooms  
Dual-Key



Size from  
**510 sq.ft -**  
**1,200 sq.ft**

RESIDENCE





# A SPACE FOR BIG AMBITIONS

This is an iconic twin tower of elegant simplicity on the skyline of Kota Samarahan—an anchor development for the new township. Premium workspaces that integrate the best of innovative technology, in combination with the lush landscape of the activity park and common facilities, bring a strong sense of work-life balance to its occupants.



**20 Storey**  
Twin Signature  
Tower



**3 Storey**  
Commercial  
Podium



Total  
**929**  
Carparks

OFFICE





# INDULGE IN EVERYDAY LIFE

Discover a wonderful new world of shopping delights. The commercial components of Arden City offer a generous selection of retail outlets, housing a fantastic mix of the latest brands and trends. Whether it's shopping or dining, this is a great place to relax and indulge in the things that make you happy.





# REFINE YOUR WELLBEING

Live in proximity to some of the best healthcare centres in the vicinity. With the latest medical facilities and highly skilled practitioners, Arden City patrons and tenants will have convenient access to reliable healthcare.

## HEALTHCARE





# LIVING AT A LEISURELY PACE

Arden City is surrounded by lush greenery, where the air is cooler and fresher, where one can find peace, away from the bustling city. Whether you choose to enjoy the outdoors and parks by yourself or with loved ones, the possible recreational activities are limitless.

LEISURE







SHAPING  
VIBRANT  
COMMUNITIES





Ibraco Berhad  
No. 6, The NorthBank  
Off Kuching-Samarahan Expressway  
93350 Kuching, Sarawak.  
F +60 82 362 233 E sales@ibraco.com

FOR MORE INFORMATION  
**082-361 111**

[www.ibraco.com](http://www.ibraco.com)  
   Ibraco Berhad

SPA APPROVAL NO. : P/ID/16-23 Disclaimer: All illustrations and color schemes are artist's impression only. The information contained herein is subject to change without notification as may be required by the relevant authorities or developers' architect and cannot form part of an offer or contract. All measurements are approximate. Whilst every effort has been made to ensure accuracy, the owner, developer and managers cannot be held responsible for any variations or inaccuracies.