



At Aster Court, life is better with many private facilities for your enjoyment. Relax in the beautiful open spaces. Live fully and make memories with loved ones.

CONVENIENT CITYWIDE CONNECTIVITY

AMENITIES WITHIN KOTA SAMARAHAN

OFFICE

- 700M to Sarawak Tropical Peat Research Institute
- 2.9KM to INFRA
- 3.4KM to SAINS Samarahan
- 3.7KM to Cocos R&D Centre
- 6.5KM to Wisma SALCRA
- 6.8KM to INTAN Sarawak

RECREATIONAL

- 1.5KM to Samarahan Golf Club
- 3.2KM to Unisentral Recreation Park
- 5.0KM to D'Virtual Park
- 11.6KM to Kota Samarahan Swimming Pool
- 11.8KM to Kota Samarahan Indoor Stadium
- 12.4KM to Samarahan Drift Park

MALL

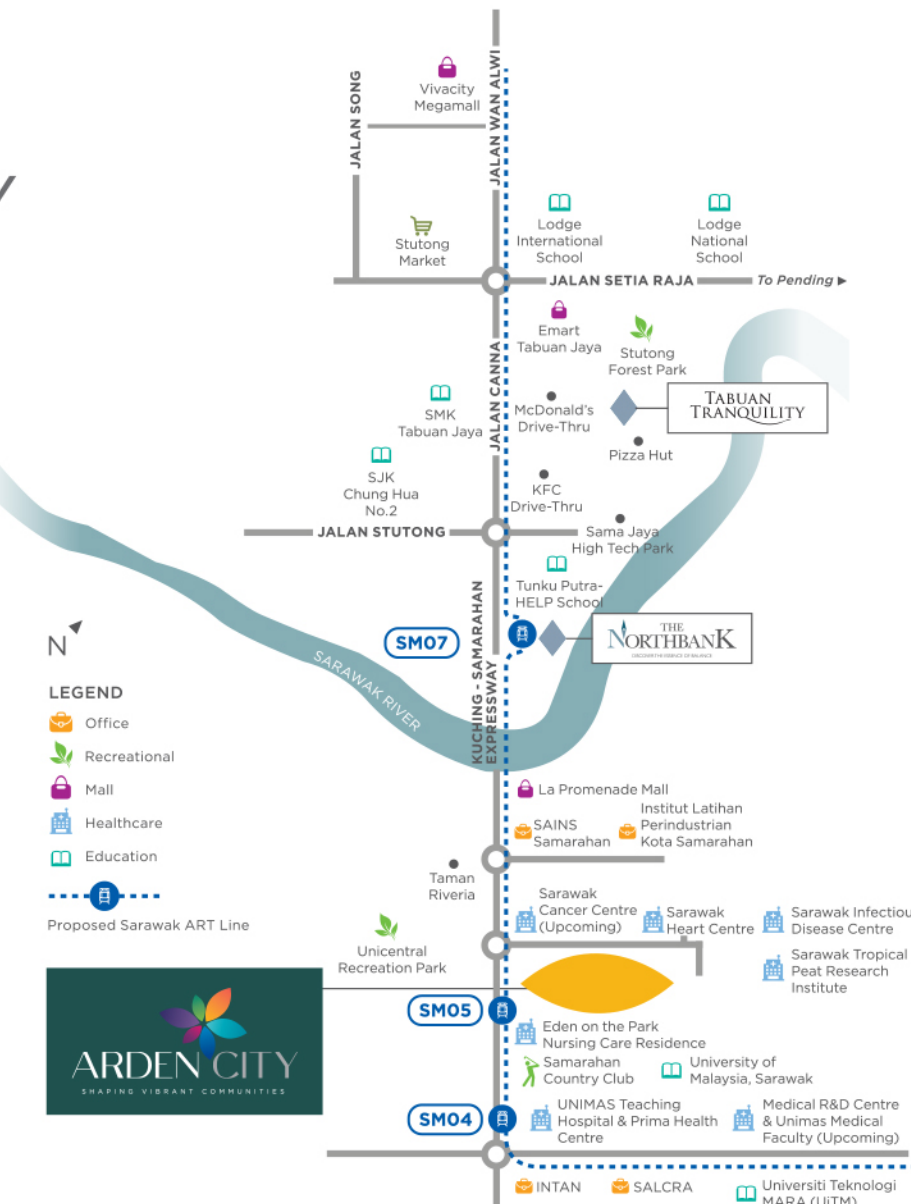
- 4.1KM to La Promenade Mall
- 7.0KM to Summer Mall
- 8.0KM to Aliman Mall

HEALTHCARE

- 350M to Sarawak Cancer Centre (Upcoming)
- 650M to Sarawak Heart Centre
- 650M to Sarawak Infectious Disease Centre
- 1.0KM to Eden on The Park Nursing Centre
- 2.0KM to UNIMAS Teaching Hospital & Prima Health Centre
- 3.0KM to Medical R&D Centre & UNIMAS Medical Faculty (Upcoming)
- 11.0KM to Klinik Kesihatan Samarahan

EDUCATION

- 2.3KM to GIATMARA Samarahan
- 2.6KM to UNIMAS
- 3.6KM to Institute Latihan Perindustrian
- 3.7KM to Kuching Skills College
- 6.5KM to UiTM
- 8.1KM to Institut Pendidikan Guru Kampus T.A.Razak



Ibraco Berhad
No. 6, The NorthBank
Off Kuching-Samarahan Expressway
93350 Kuching, Sarawak
F +60 82 362 233 E sales@ibraco.com

FOR MORE INFORMATION
082-361 111

www.ibraco.com
f in Instagram Ibraco Berhad



ASTER COURT



**IN THE CITY
BY THE GREENS**



**YOUR
URBAN
OASIS**

Aster Court is among the best serviced apartments in Kota Samarahan. It has modern designs and beautiful living spaces. It's perfect for people who live and work nearby, offering a home with green surroundings, away from the busy city.



MASTER PLAN



LEAD A PROACTIVE WAY OF LIFE

Whether you're working on fitness goals or relaxing, every area is designed for peace and quiet. Aster Court offers true privacy, helping you refresh your mind and body.

FACILITIES PLAN

LEVEL 1

- 1 Management Office
- 2 Games Room
- 3 Toilets
- 4 Game Court
- 5 BBQ Area
- 6 Swimming Pool + Kids Pool + Shallow Pool
- 7 Children Play Area
- 8 Central Green
- 9 Commercial Space
- 10 Mailbox Room
- 11 Covered Car Park
- 12 Motorcycle Parking
- 13 EV Charging Point
- 14 Washing Bay

LEVEL 2

- 15 Multi-purpose Hall
- 16 Gym



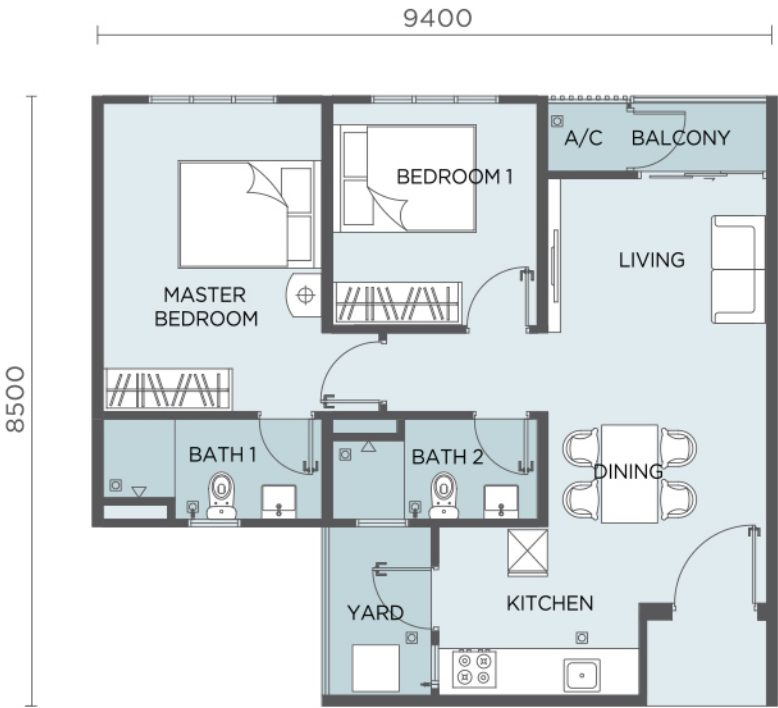
TYPE 531 sqft
A 1 Bedroom
1 Bathroom



TYPE 879 sqft
C 3 Bedrooms
2 Bathrooms



TYPE 748 sqft
B 2 Bedrooms
2 Bathrooms



TYPE 1,195 sqft Dual Key Unit
D 4 Bedrooms
3 Bathrooms



TYPE A

531 SQ.FT.
1 BEDROOM

TYPE B

748 SQ.FT.
2 BEDROOMS

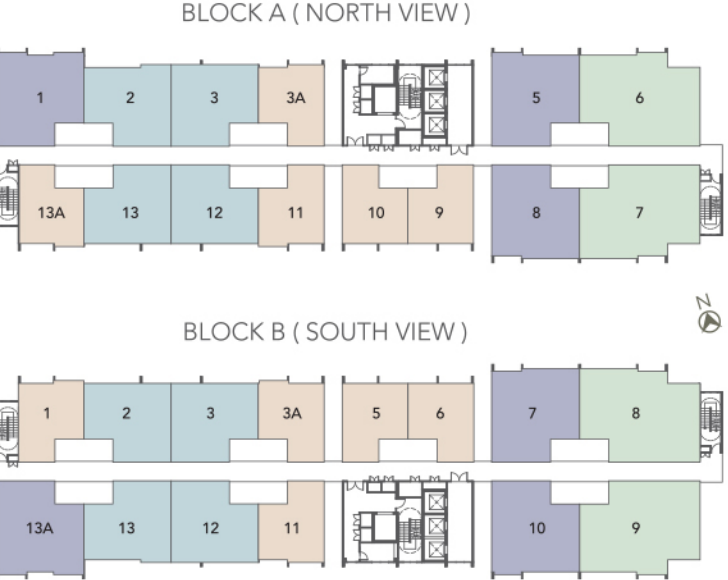
TYPE C

879 SQ.FT.
3 BEDROOMS

TYPE D

1,195 SQ.FT.
4 BEDROOMS

Dual Key Unit



LEVEL 2 TO LEVEL 25